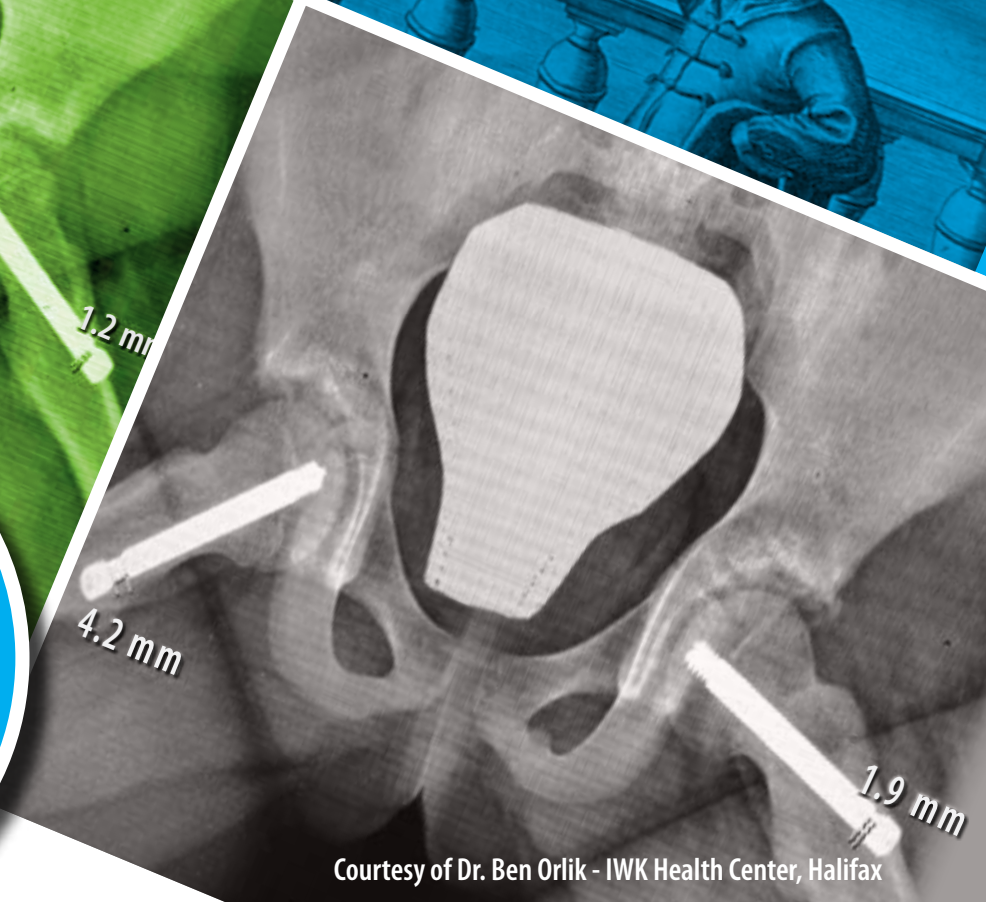


In the early 1600's Galileo developed the telescope to reach new frontiers in astronomy...



...400 years later Pega Medical developed the Free Gliding SCFE Screw to reach new frontiers in Pediatric Orthopedics



**GROWING ADVANTAGES FOR GROWING PATIENTS**

- Allow normal growth
- Increased fixation and rotational stability
- Avoid protruding screw placement
- Easy removal
- Avoids premature closure or alteration of the physal plate

Courtesy of Dr. Ben Orlik - IWK Health Center, Halifax

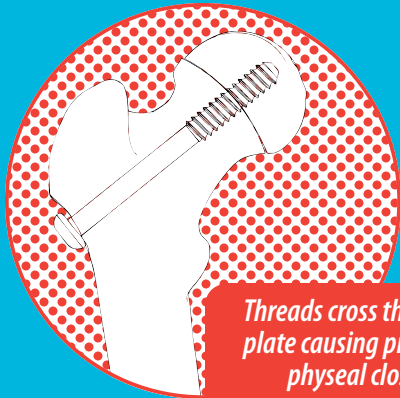




SCFE  
SCREW

# FREE GLIDING

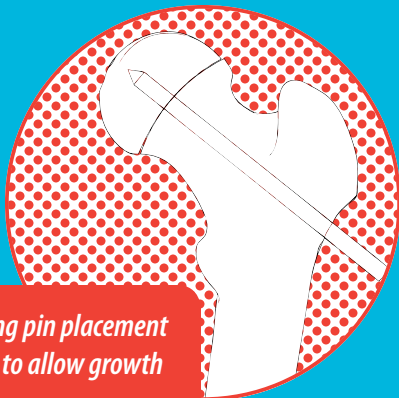
by Pega Medical



*Fully or partially threaded screws*

*Threads cross the growth plate causing premature physal closure*

*Pin fixation*



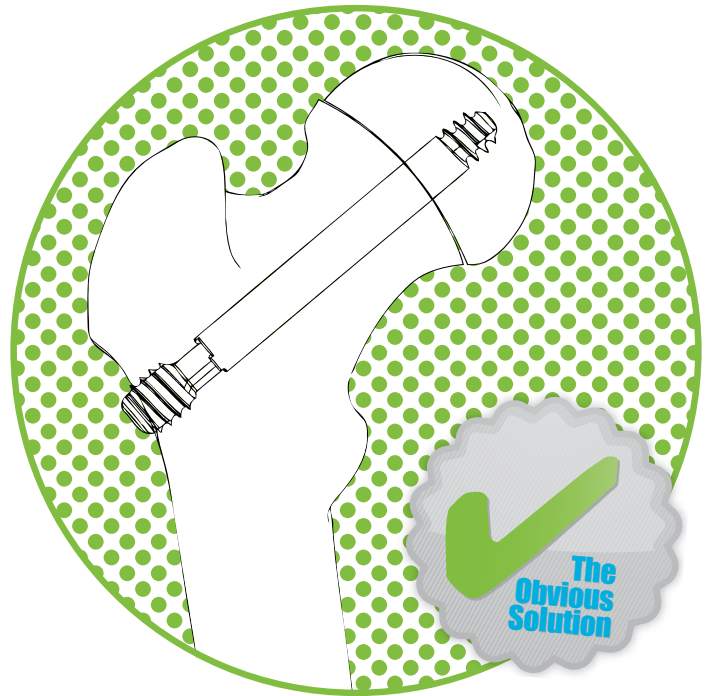
*Protruding pin placement required to allow growth*



*Laterally threaded screws*

*Loss of support and continued slippage*

The **Free-Gliding SCFE Screw System** is a self-extending cannulated screw intended for use in fixation of Slipped Capital Femoral Epiphysis and femoral neck fractures. The design of the screw includes a male component (which is attached to the lateral cortex) and a female component (which is attached at the proximal epiphysis). Anchorage of the components is achieved through threaded fixation. Stable fixation and rotational stability is created at the fracture (slip) site while avoiding compression forces thus avoiding premature growth arrest.



The **Free-Gliding SCFE Screw System** is manufactured in medical grade Stainless Steel (316L, ASTM F138). It is available in 6.5 mm and 7.3 mm diameters. The male and female components are combined to cover a range from 48mm to 102mm in 2mm increments with a maximum of 30mm of growth potential.



Ø: 6.5 & 7.3 mm  
L: 48 – 102 mm / 2 mm incr.

**Pega Medical Inc.**

**+1 450 688-5144**

**[Pegamedical.com](http://Pegamedical.com) · [info@pegamedical.com](mailto:info@pegamedical.com)**

Developed in collaboration with:

François Fassier, MD  
Marie Gdalevitch, MD  
Shriners Hospitals for Children  
Montreal, Canada

FG-BR-EN v2

1111 Autoroute Chomedey, Laval, Qc CANADA H7W 5J8