

STONEHENGE

From the Old English words «stān» meaning «stone» and «hencg» meaning «hinge».



HINGE PLATE

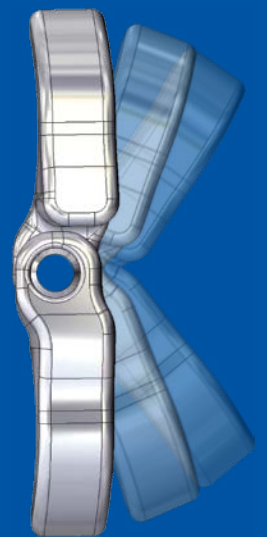
From the modern orthopedic concept of «Guided Growth» comes a jointed device with a pivot at which angular correction occurs.



The Hinge Pediatric Plating System is the newest addition to Pega Medical's pediatric devices designed to correct deformities in growing children. This innovative plate is intended to fix pediatric mal-alignment through a less-invasive, gentle correction. The rationale behind the design of the Hinge Plate is to achieve the ideal placement of a **true hinge** at the growth plate, which allows for a guided manipulation of the deformity with less risk of implant failure. Unrestrained angular correction around the hinge diminishes structural stresses on the device.

Big advantages for small people:

- Ideal placement of a **true hinge** at the growth plate
- Stronger screw design
- Easily adaptable to different bone morphology
- Variety of plate and screw sizes
- Unrestrained angular rotation around fulcrum
- Precise and simple surgical technique



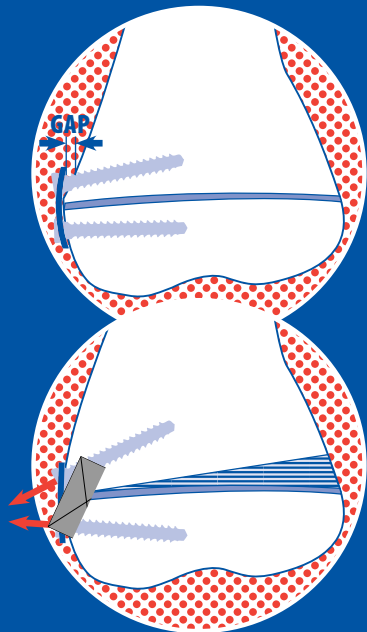
 Hinge
Plate

US Patent Pending

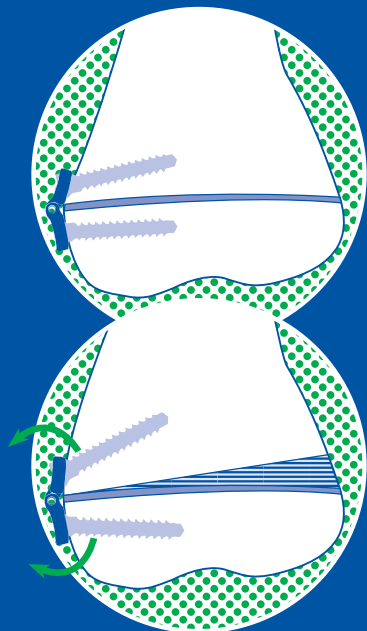
 Pega Medical

Hinge Plate

Deformable plates with no mechanical hinge generate stresses and expulsion forces on the screws.



The Hinge Plate continuously conforms to the surface of the bone without stresses or forces producing an unrestrained angular correction around a **true hinge**.



The Hinge Pediatric Plating System is an articulated plate used to guide growth and deformity correction. Indicated in children and adolescents with deformities such as *genu varum* and *genu valgum*, it includes one plate and two screws. By fixing the plate on either side of the physal plate, axial growth can be controlled and angular deformity corrected.

Plates and screws are manufactured in medical grade Stainless Steel (316L as per ASTM F138). The plate is provided in three different sizes with distances between the anchoring points of the screws of 12, 16 and 20mm. The screws are provided in three different lengths of 25, 30 and 35mm.

Cat. #	Implant Components
HPI012	Small Hinge plate 12 mm 
HPI016	Medium Hinge Plate 16 mm 
HPI020	Large Hinge Plate 20 mm 
HPS025	Screw 4.5 x 25 mm 
HPS030	Screw 4.5 x 30 mm 
HPS035	Screw 4.5 x 35 mm 

Pega Medical Inc.

+1 450 688-5144

www.pegamedical.com • info@pegamedical.com

Developed in collaboration with:
 Daniel Green, MD, FACS
 Pediatric Orthopedic and Scoliosis Services
 Hospital for Special Surgery, NY, NY USA

1111 Autoroute Chomedey, Laval, Qc CANADA H7W 5J8